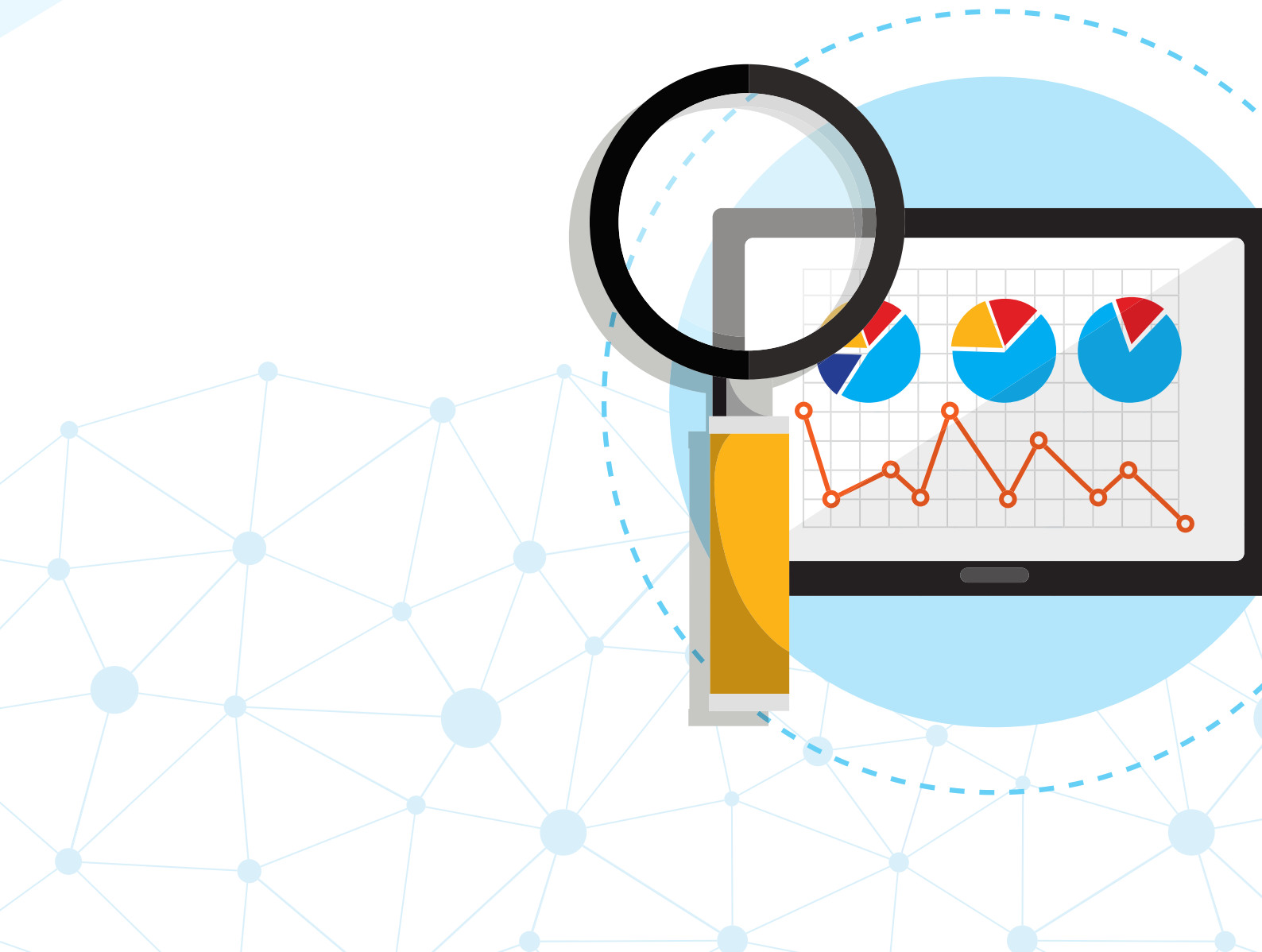




ACTIVEPIVOT

In-memory analytical database

DATA SHEET





High Performance Analytics

ActivePivot enables instant analysis of large volumes of complex and dynamic data to assist with timely business decisions.

In an ever-changing world where a real-time response can be critical, ActivePivot is extremely fast, always up to date with the latest events and computes using your own business's logic. As a result, our superior solution gives a competitive edge to your operations and decision making process.

With a component-based architecture, our software can be deployed at a much lower total cost of ownership compared to other dedicated software solutions. It fits on top of your existing systems, pulling information into memory, and feeding back analysis results within milliseconds to help you develop your business.

It requires limited upfront deployment investment and can be reused for a large variety of business areas across many departments; your effective ROI can thus be increased substantially.

Features

A Comprehensive Product Suite

ActivePivot is a set of powerful components dedicated to making your analytics actionable. It fits easily within your own operational systems and consists of:

- ▶ **ActivePivot:** a powerful in-memory analytics platform that continuously processes new events and passes updated results instantly to users.
- ▶ **ActiveUI:** a web-based interface that enables real-time analysis, sharing of information and collaboration.
- ▶ **ActiveMonitor:** a value-added monitoring and messaging service, triggering specific actions to people or systems based on defined rules.

Intelligent Business Applications

Active Pivot is used to construct business applications for both operational decision makers and analysts. All the KPIs and analysis results needed are in one place at your fingertips and in real-time. So decisions can be made when appropriate, rather than having to adapt work practices to results and KPI availability.

ActivePivot turns raw data into actionable information. It applies your tailored calculations and business logic to very large amounts of data, delivering what you specifically need. You can further share and collaborate around your analysis using ActiveUI's advanced features.

ActivePivot is convenient to use as its exceptional performance delivers query results and drill-downs within milliseconds, even when millions of records are involved.

ActivePivot is a dynamic platform that provides the flexibility to build business solutions efficiently and in a cost effective way. Designed to meet your varied business intelligence needs, it will give your company a leading edge in a fast changing and challenging global environment.



Continuous Event Processing

ActivePivot continuously processes new events, whatever their flow frequency, and transforms them into results that are pushed to users without delay. Such real-time capability is enabled by powerful proprietary data compression algorithms and optimised multi-threading.

ActivePivot only aggregates new data impacted, without having to rebuild the OLAP cube, and this saves time and minimises latency. It makes use of intelligent updating, so that only the relevant data cells are refreshed.

A 'continuous query' push feature enables users to query ActivePivot in real-time, so that they are informed of any change as it happens. This component is also used by ActiveMonitor so that as soon as a change takes place, an immediate response is possible.

What-If Scenario Evaluation

With ActivePivot, you can perform instant simulations and 'what-if' analysis on the whole range of your data sets to evaluate alternative scenarios and make projections; in this way you can reach informed business decisions based on relevant real-world situations.

'What-if' scenarios are performed by modifying data within the analysis cube. Each user can independently perform simulations and run queries with full privacy and with no impact on other users. Data can also be added or removed from the OLAP cube instantly for these simulations, directly from ActiveUI or any other user interface.

Open Components for Easy Integration

ActivePivot is based on advanced technologies and open components that allow seamless integration with existing systems. Deployment is easy because it adapts to your existing assets and requires limited integration investment:

- ▶ ActivePivot is object-oriented and can integrate with any data source. Furthermore, through ActivePivot Integration Services it supports most standards including databases (SQL and JDBC), files (CSV and XML) and message buses (JMS), or customised feeds.
- ▶ Business logic for simple formulas can be defined by users (the BI standard MDX is fully supported) or be easily implemented through Java, where possibilities for building customisable logic are endless.
- ▶ Users can connect to ActivePivot through standards (MDX, XMLA, web services), for example a Microsoft® Excel Pivot Table.



Key Benefits

- ▶ Instant analysis at the speed of thought
- ▶ Data-based views to support business and operational decisions
- ▶ Enhanced analytics relevance based on your own business logic and algorithms
- ▶ Instantaneous views of updated data without latency
- ▶ Rapid and cost efficient deployment
- ▶ Intuitive 'slice and dice' and fast drill-through to underlying detail
- ▶ Split second simulation and scenario testing
- ▶ Component-based architecture which has no impact on your existing systems
- ▶ Accessed by any standard BI tool or Microsoft® Excel



LONDON

6th floor, Shaftesbury House
151 Shaftesbury Avenue
London WC2H 8AL
Tel: +44 20 7836 8820
Fax: +44 20 7240 2967

NEW YORK

1412 Broadway Suite 2300
New York, NY 10018 USA
Tel: +1 646 688 4442
Fax: +1 646 688 4451

PARIS

46 rue de l'Arbre Sec
75001 Paris, France
Tel: +33 1 40 13 91 00
Fax: +33 1 40 13 84 51

SINGAPORE

29 C Stanley Street, #03-01
068738 Singapore
Tel: +65 62 24 46 63

HONG KONG

21/F On Hing Building
1 On Hing Terrace
Central, Hong Kong
Tel: +852 3971 9154

About ActiveViam

ActiveViam provide precision data analytics tools to help organisations make better decisions faster.

ActiveViam started in 2005 with the vision of leveraging in-memory technology to create an analytics platform where businesses could leverage the largest data sets without restrictions, keep them up-to-date in real time and use them to empower their decision makers.

Our goal at ActiveViam, is to let organisations not only make decisions faster, but better; to not only reach their data, but their potential; to not only see their data, but find their way into the future.

ActiveViam is a privately owned company with offices in Paris, London, New York, Hong Kong and Singapore.

For more information please visit:
www.activeviam.com